

An abstract geometric artwork featuring a complex arrangement of overlapping, semi-transparent shapes in various colors including teal, blue, purple, pink, orange, and yellow. The composition includes several arch-like structures and rectangular blocks, creating a sense of depth and architectural form. The background is a light, textured grey.

National School Redesign Design Session Two

Incorporating Multiple Perspectives
Empathy Mapping
Headlining

November 13, 2024

Connection Prompt

Share your name and one or two adjectives that describe what you are bringing with you today from the stories others shared with you about when you were your best.



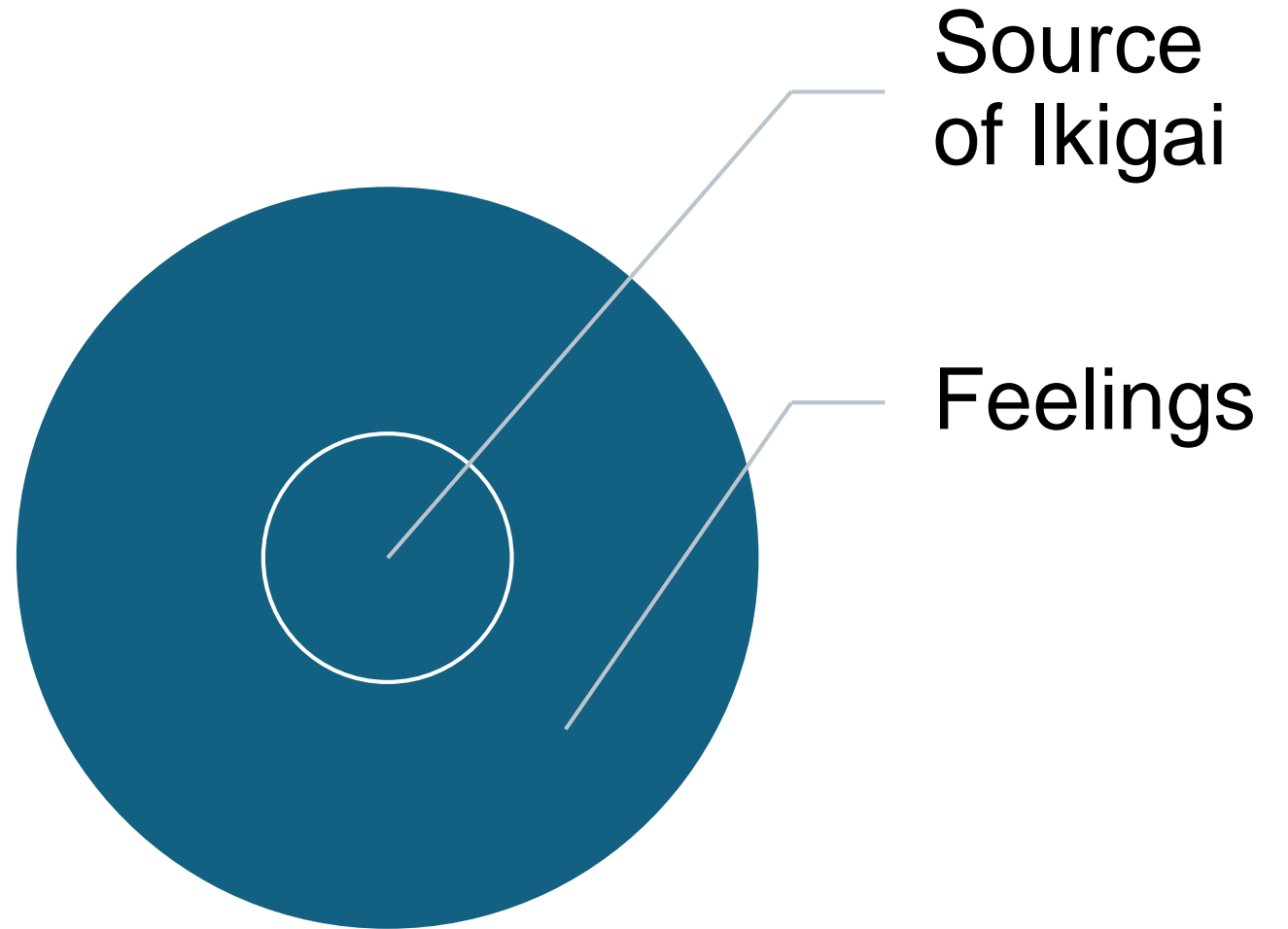
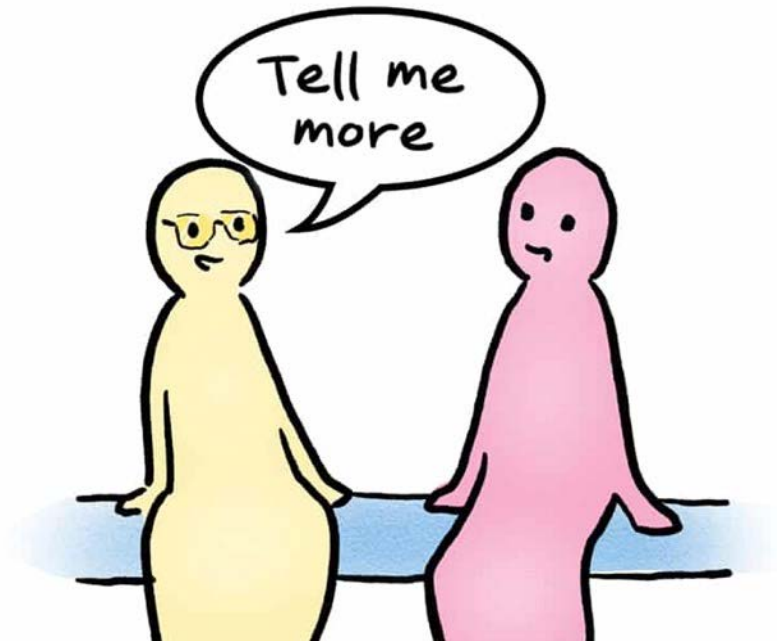
Fostering Connection

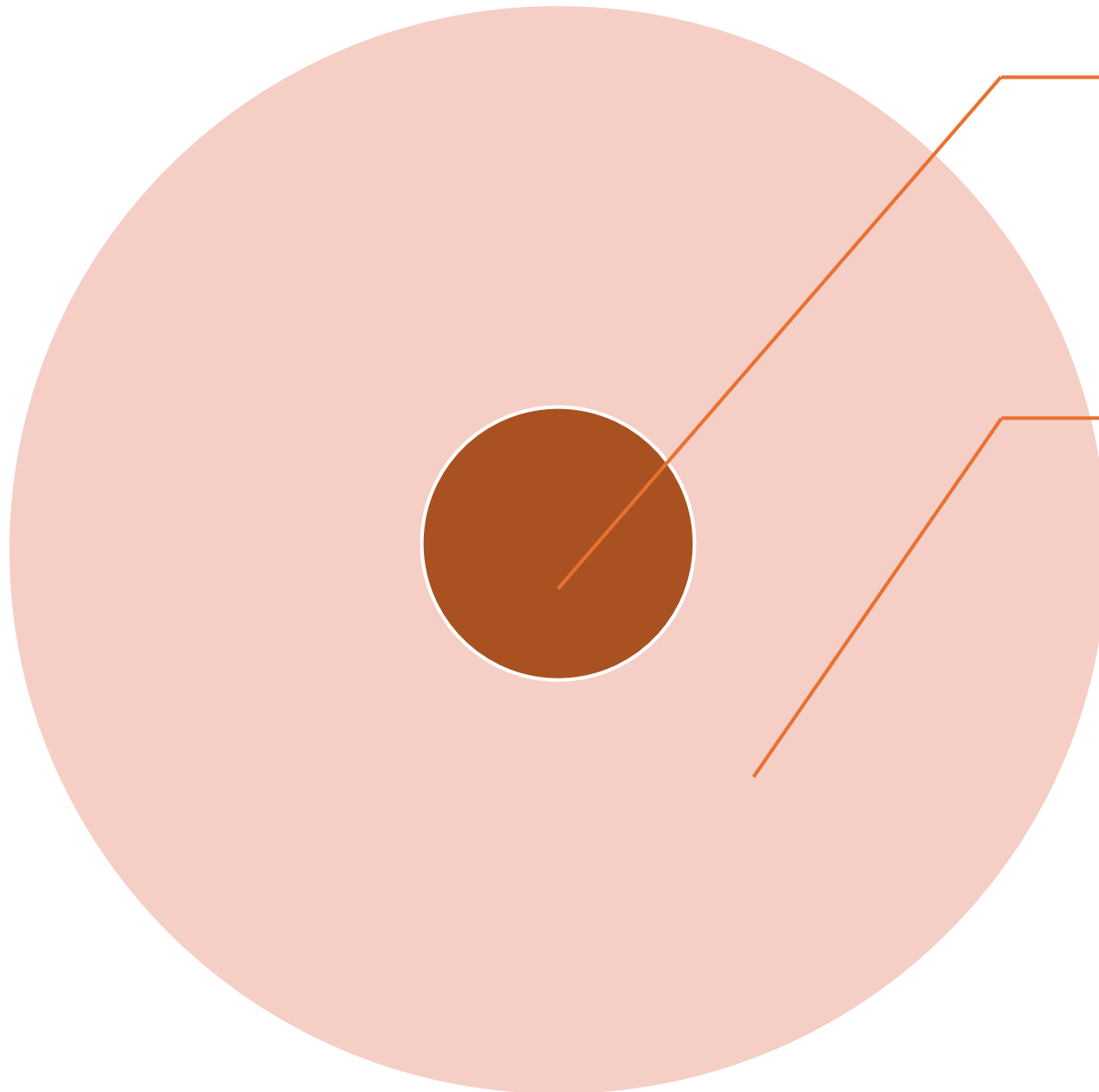
Design a series of experiences that enable all members of the school community to embody a shared purpose and that allows genuine connectedness amidst and between students and adults.

Building Pathways to A Life Worth Living

Design a series of experiences that allow each school member to discover potential pathways and vocations beyond high school that resonate with their individual passion and future views of themselves.

Ikigai
Iki (life) + gai
(reason)





Join Zoom
with this team

Joyful
Hopeful
Known

starting small → focus on the details

releasing yourself → accept who you are

harmony and sustainability → rely on others

the joy of little things → appreciate sensory pleasure

being in the here and now → find your flow.



ALL of this is
ikigai!



Allow and accept
needs of self and
needs of generative
eco system waiting to
emerge.

Empathy Mapping

With your team begin to share your experiences interviewing, shadowing and observing.

One approach is to create one empathy map for each group of “stakeholders”

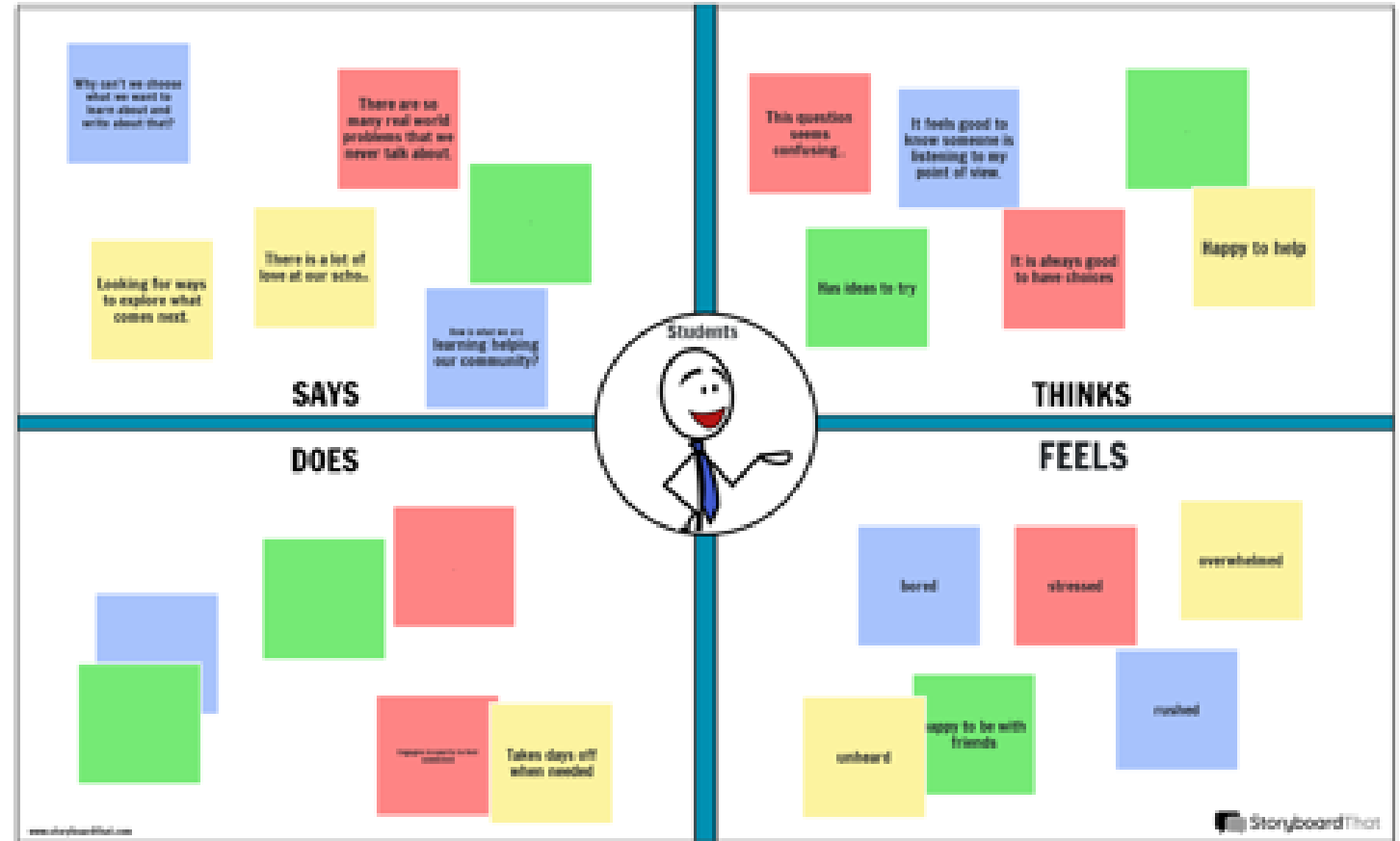
This is not the only way

What did they say? quotes

What do they do?

behaviors/body language

What are the emotions? Thoughts?





Resonance

the reinforcement or prolongation of sound by reflection from a surface or by the synchronous vibration of a neighboring object.

<i>GAINING</i>	Multiple	<i>PERSPECTIVES</i>
Students	Alumni	Families
<i>Partner Organizations</i>	Transportation	Staff

Storyboard

Create Headlines.
What resonates?

Next Steps

Team

- Continue sharing your immerse, engage and observe experiences and adding to your empathy maps and headlines.
- Decide on one or two headlines you might want to explore more deeply.
- Bring that work to our Dec 3 Design Session 3

Individual

- Create a vision board of a compassionate school ecosystem designed uniquely for you.
- What experiences might it offer that you would describe as joyful?
- Be bold, consider new activities that fit your values and lifestyle.



Closing word to
describe how you
are feeling about
today's design
session.



